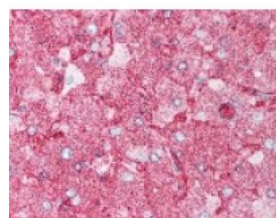




## MINK1 Antibody

CATALOG NUMBER: 48-332



Immunohistochemistry staining of MINK1  
in liver tissue using MINK1 Antibody.

### Specifications

<b>SPECIES REACTIVITY:</b>	Bat, Gibbon, Gorilla, Hamster, Horse, Human, Monkey, Mouse, Pig, Rat
<b>TESTED APPLICATIONS:</b>	ELISA, IHC
<b>APPLICATIONS:</b>	MINK1 antibody can be used in ELISA, and immunohistochemistry starting at 10 ug/mL.
<b>USER NOTE:</b>	Optimal dilutions for each application to be determined by the researcher.
<b>SPECIFICITY:</b>	BLAST analysis of the peptide immunogen showed no homology with other human proteins.
<b>IMMUNOGEN:</b>	MINK1 antibody was raised against a peptide located near the internal domain of MINK1 (Human).
<b>HOST SPECIES:</b>	Rabbit

### Properties

<b>PURIFICATION:</b>	Immunoaffinity Chromatography
<b>PHYSICAL STATE:</b>	Liquid
<b>BUFFER:</b>	PBS, 0.1% sodium azide.
<b>STORAGE CONDITIONS:</b>	MINK1 antibody should be stored long term (months) at -80 °C and short term (days) at 4 °C. As with all antibodies avoid freeze/thaw cycles.
<b>CLONALITY:</b>	Polyclonal
<b>CONJUGATE:</b>	Unconjugated

### Additional Info

<b>ALTERNATE NAMES:</b>	MINK1, HMINKbeta, GCK family kinase MiNK, MAP4K6, Misshapen/NIK-related kinase, MinK, Mink 1, Misshapen/NIKs-related kinase, HMINK, MEKKK 6, Mink 2, B55, ZC3, MEK kinase kinase 6, Misshapen-like kinase 1, YSK2
<b>ACCESSION NO.:</b>	Q8N4C8
<b>PROTEIN GI NO.:</b>	296437370
<b>OFFICIAL SYMBOL:</b>	MINK1
<b>GENE ID:</b>	50488

### Background

**BACKGROUND:**

MINK is a MSN type protein kinase. The protein has a structure similar to other germinal center kinases, and it has been shown to activate the c-Jun N-terminal kinase and p38 pathways.

---

**FOR RESEARCH USE ONLY**

December 13, 2016