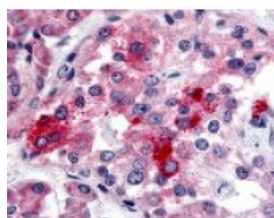




## BRS3 Antibody

CATALOG NUMBER: 48-152



Immunohistochemistry staining of BRS3 in pancreas, islet tissue using BRS3 Antibody.

### Specifications

<b>SPECIES REACTIVITY:</b>	Gibbon, Gorilla, Human
<b>TESTED APPLICATIONS:</b>	IHC
<b>APPLICATIONS:</b>	BRS3 antibody can be used in ELISA, Western Blot, immunohistochemistry starting at 10 ug/mL, immunocytochemistry, and immunoprecipitation.
<b>USER NOTE:</b>	Optimal dilutions for each application to be determined by the researcher.
<b>SPECIFICITY:</b>	BLAST analysis of the peptide immunogen showed no homology with other human proteins, except CNM2 (45%).
<b>IMMUNOGEN:</b>	BRS3 antibody was raised against a peptide located in the 2nd extracellular domain of BRS3 (Human).
<b>HOST SPECIES:</b>	Rabbit

### Properties

<b>PURIFICATION:</b>	Immunoaffinity Chromatography
<b>PHYSICAL STATE:</b>	Liquid
<b>BUFFER:</b>	PBS, 0.1% sodium azide.
<b>STORAGE CONDITIONS:</b>	BRS3 antibody should be stored long term (months) at -80 °C and short term (days) at 4 °C. As with all antibodies avoid freeze/thaw cycles.
<b>CLONALITY:</b>	Polyclonal
<b>CONJUGATE:</b>	Unconjugated

### Additional Info

<b>ALTERNATE NAMES:</b>	BRS3, BB3 receptor, Bombesin-like receptor 3, Bombesin receptor subtype 3, Bombesin receptor subtype-3, BRS-3, BLP receptor subtype 3, Bombesin receptor 3
<b>ACCESSION NO.:</b>	P32247
<b>PROTEIN GI NO.:</b>	416726
<b>OFFICIAL SYMBOL:</b>	BRS3
<b>GENE ID:</b>	680

## Background

**BACKGROUND:** BRS3 is classified as an Orphan-A Receptor and is highly similar to the bombesin receptors but has a very low affinity for bombesin itself. Mice lacking BRS3 develop metabolic defects and obesity, suggesting that BRS3 may be an important target for obesity research. In addition, BRS3 may be involved in diabetes and hypertension.

---

**FOR RESEARCH USE ONLY**

December 13, 2016